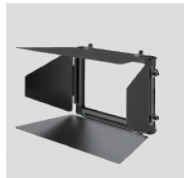


## Optional Accessories

### SHAPING



KS-3 Softbox  
for K2000 Power



BK4-3 Barndoor  
for K2000 Power



HG30-3 Honeycomb  
for K2000 Power



HG45-3 Honeycomb  
for K2000 Power



Battery Plate  
3-stud Gold Mount

### POWER

### CONTROL



DMX Module



Wifi Module



Dedicated Controller  
for Wifi Module



Wired Dimmer



Wireless Router



# Quick Start Guide



**K2000 Power**  
LED Panel Light

- 1 Getting Started
- 2 Functions

## What's in the box?



K2000 Power



V-mount Plate



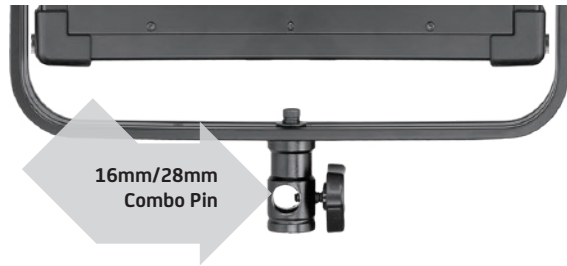
V-mount AC adapter  
with Cable



## 1 Getting Started

### 1 Mount

16 mm / 28 mm Combo Pin (Baby 5/8 inch / Junior 1-1/8 inch Combo Pin)



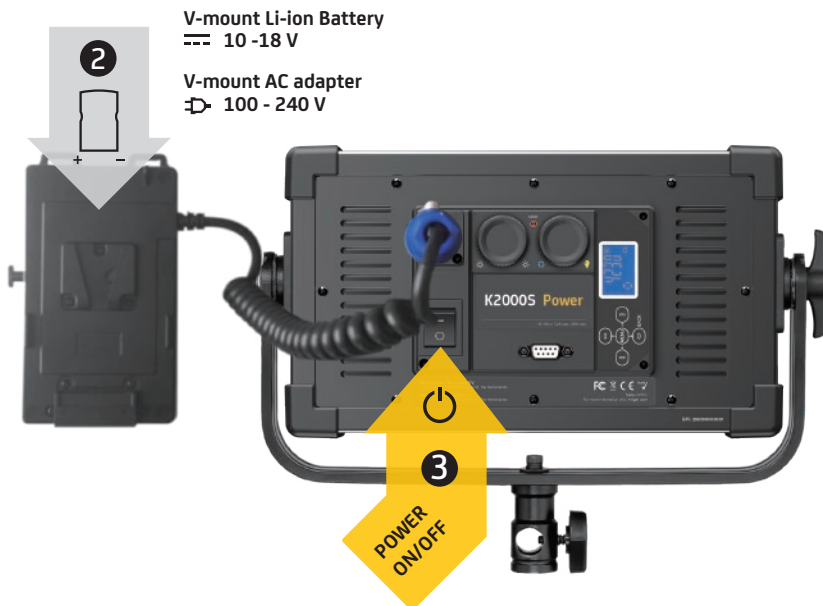
### 2 Power

Two power options

- ① V-mount Li-ion battery
- ② V-mount AC adapter

### 3 Let's do this!

Turn the light ON



## 2 Functions



### 1 Adjust the Intensity

Use the <Intensity> knob to adjust the light's intensity

### 2 \* Adjust the Color Temperature (only the bi-color version)

Use the <Color Temperature> knob to adjust the color temperature



### Tips

How to mount the panel for use with softbox

